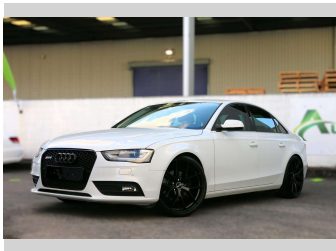


# 2013 Audi A4 4.5 Grade, 2.0T, RS4 Grill, Lowered on



JAPANESE AUCTION

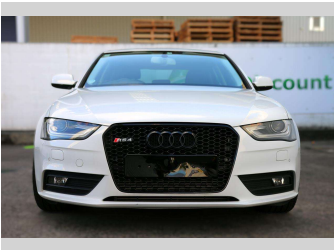
4.5 GRADE

Appraised by Japanese Auction House

JAPANESE CAR AUCTION GRADING

ASK FOR AUCTION SHEET

BOOK NOW



Purchase Price

\$19,950

Includes GST, Registration & Licensing

Indicative repayments

\$153.13 per week\*

Based on a 36 month term & no deposit.

Total repayments (156) = \$23,887.93

mtf finance

Gain peace of mind with Mechanical Breakdown Insurance. Ask us how.

ASSURANT®

Top features

None Listed

Body Style  
4 door, Sedan

Odometer  
28,650 km

Engine  
2000 cc

Fuel Type  
Petrol

Transmission  
Auto

Wheels  
-

VIN  
WAUZZZ8K8DA254382

Interior  
-

Safety



Based on 2024 UCSR rating for 08-15 models

Reg No.  
-

Ext Colour  
White

History  
-

Seats  
-

CO2 Emissions  
★★★★☆☆  
188 grams/km

Energy Economy  
★★☆☆☆☆

Annual fuel cost of \$3,140  
8L per 100km

Cost per year is an estimate based on petrol price of \$2.80 per litre and an average distance of 14000 km. Emissions and Energy Economy figures standardised to 3P WLTP.

Stock ID: 11804



Auto Discount | Phone 09 390 0303 | Email [musta5a@hotmail.com](mailto:musta5a@hotmail.com)  
33b Andrew Baxter Drive, Mangere, Auckland 1041, New Zealand  
[www.autodiscount.co.nz](http://www.autodiscount.co.nz)

\* Auto Discount is not a lender nor a financial adviser. Any amounts displayed should not be seen as an offer of finance or taken as financial advice. The interest rate, fees and loan term used in this calculation may not actually represent those available from lenders. Actual interest rates, fees and loan terms will vary per lender and are typically based on an assessment of your credit risk and responsible lending criteria. Any repayment amounts displayed are indicative only and have been calculated using several other indicative inputs. The interest rate used in this calculation is an arbitrary 9.95%, however exact interest rates vary per lender. The term of the loan used in this calculation is 36 month. Exact terms available vary per lender although options typically include 6, 12, 18, 24, 36, 48 and 60 months. This calculation also includes two typical mandatory fees charged by lenders. These are an account admin fee of \$8.20 per month (other payment frequencies may be available) and a one-off establishment fee of \$375.00. Typically, this fee can be paid upfront or, as in this calculation, be capitalised over the contract term, ie. included in the loan amount. These fees can vary per lender and other non-mandatory fees and charges may also apply. The total amount of repayments has been calculated by multiplying 156 weekly repayments (based on a 36 month term) by the weekly repayment amount of \$153.13 which equals \$23,887.93. This calculator does not consider any of your own personal circumstances and we strongly suggest you seek budgeting advice prior to committing to any loan contract. Responsible lending criteria and lender terms and conditions will likely apply to any finalised loan contract. Proof of security and/or vehicle insurance may also be required before proceeding.