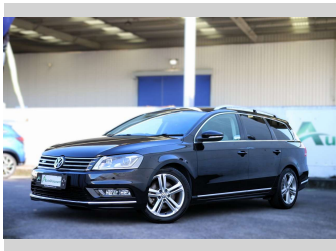
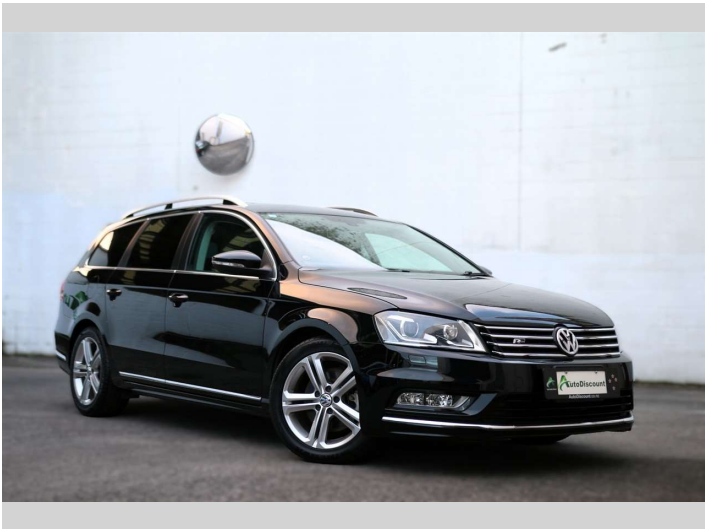
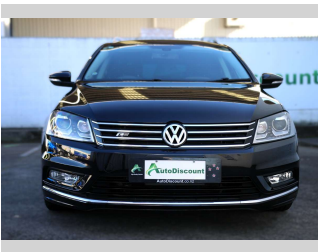
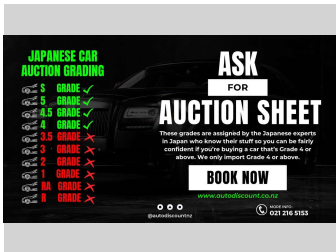


2014 Volkswagen Passat 4 Grade, R-Line Edition,



Appraised by Japanese Auction House



Purchase Price

Includes GST, Registration & Licensing

\$15,950

Indicative repayments

\$123.36 per week*

Based on a 36 month term & no deposit.
Total repayments (156) = **\$19,244.83**



Gain peace of mind with
Mechanical Breakdown
Insurance. **Ask us how.**



Top features

None Listed

Body Style

5 door, Station Wagon

Odometer

43,360 km

Engine

1400 cc

Fuel Type

Petrol

Transmission

Auto

Wheels

-

VIN

VWVZZZ3CZEE168402

Interior

-

Safety



Reg No.

-

Ext Colour

Black

History

-

Seats

5 seats

CO2 Emissions

☆☆☆☆☆☆

Energy Economy

☆☆☆☆☆☆

Annual fuel cost not available

Energy consumption unknown.

Stock ID: 11918



Auto Discount | Phone 09 390 0303 | Email musta5a@hotmail.com
33b Andrew Baxter Drive, Mangere, Auckland 1041, New Zealand
www.autodiscount.co.nz

* Auto Discount is not a lender nor a financial adviser. Any amounts displayed should not be seen as an offer of finance or taken as financial advice. The interest rate, fees and loan term used in this calculation may not actually represent those available from lenders. Actual interest rates, fees and loan terms will vary per lender and are typically based on an assessment of your credit risk and responsible lending criteria. Any repayment amounts displayed are indicative only and have been calculated using several other indicative inputs. The interest rate used in this calculation is an arbitrary 9.95%, however exact interest rates vary per lender. The term of the loan used in this calculation is 36 month. Exact terms available vary per lender although options typically include 6, 12, 18, 24, 36, 48 and 60 months. This calculation also includes two typical mandatory fees charged by lenders. These are an account admin fee of \$8.20 per month (other payment frequencies may be available) and a one-off establishment fee of \$375.00. Typically, this fee can be paid upfront or, as in this calculation, be capitalised over the contract term, ie. included in the loan amount. These fees can vary per lender and other non-mandatory fees and charges may also apply. The total amount of repayments has been calculated by multiplying 156 weekly repayments (based on a 36 month term) by the weekly repayment amount of \$123.36 which equals \$19,244.83. This calculator does not consider any of your own personal circumstances and we strongly suggest you seek budgeting advice prior to committing to any loan contract. Responsible lending criteria and lender terms and conditions will likely apply to any finalised loan contract. Proof of security and/or vehicle insurance may also be required before proceeding.